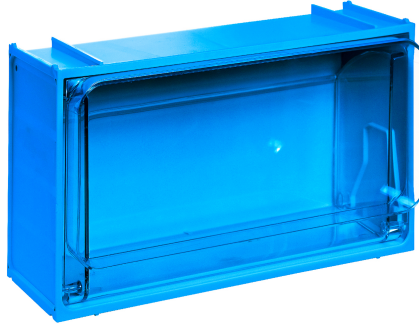


Image not found or type unknown



Technical information

Productnumber : 15-CB50-3-W



Product description

Assortment cabinet with 1 tilting drawer. The blue (RAL 5017) housing of the assortment cabinet has a size of 300x155x175 mm. On the inside there is 1 tilting drawer made of polyethylene terephthalate (PET), measuring 255x107x105 mm. The removable tilting drawer provides a structured storage solution for small parts, tools and accessories, keeping the workspace neat and organised. With a temperature resistance of -50°C to +150°C, this cabinet is suitable for extreme temperature environments, such as workshops where temperatures can vary. The polypropylene casing offers durability and shock resistance, making the cabinet suitable for demanding workshop environments where rough handling or sudden impact may occur. The polyethylene terephthalate (PET) drawer adds extra strength and withstands high loads, making the cabinet suitable for storing heavier tools and parts. Suitable for food contact.

Specifications

Article arrangement: New
Version: with 1 compartment
Food-safe: yes
Ral colour: 5017
Internal length (mm): 255
Internal width (mm): 107
Internal height (mm): 105
Type number: CB50
EAN Code (Gtin) 8719424233971

Type: assortment cabinet
Material: polypropylene
Colour: blue
Length (mm): 300
Width (mm): 155
Height (mm): 175
Weight (kg) 1
Temperature resistance: -50°C tot +150°C

Scan the QR code for more information



KRUIZINGA.NL®
Opslag- en transportmiddelen

KRUIZINGA.DE®
Lager- und Transportmittel

KRUIZINGA.FR®
Stockage et ressources de transport

KRUIZINGA.COM®
Material handling equipment