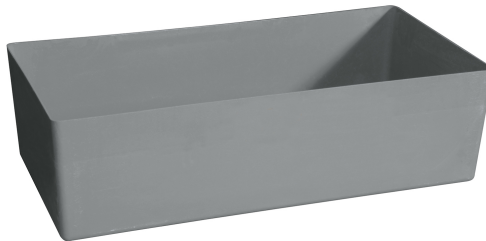
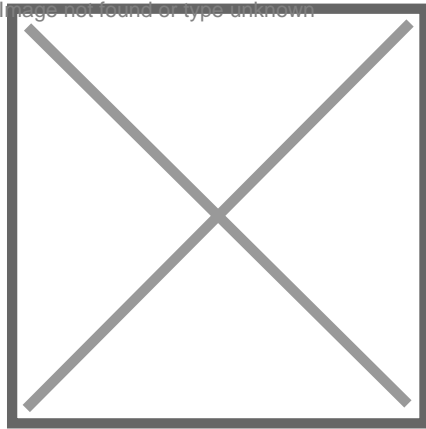


Image not found or type unknown



Technical information

Productnumber : 48-10380

Product description

Plastic (GRP) receptacle suitable for one 65 liter steel or plastic drum.

GRP receptacles are ideal for the storage of environmentally hazardous substances. GRP (Glassfiber Reinforced Polyester) is a universally applicable material for the storage of environmentally hazardous substances. The thermosetting plastic basic structure in combination with the glass fiber reinforcement ensures favorable fire behavior and high chemical resistance. GRP sump trays combine the properties of steel and plastic. Due to their absolute corrosion resistance, GRP collection trays can be placed directly on the ground. The low installation height facilitates use in factories and workshops.

Guideline for storage and temporary storage for drip trays with regard to fire safety, occupational safety and environmental safety according to PGS 15 (publication series of hazardous substances):

A storage facility must be constructed in such a way that leaked or spilled hazardous liquid collected in a container. To this end, the collection container must have a capacity of at least 110% of the largest package. However, if 10% of the total content of the packages is more than 110% of the content of the largest package, then the collection capacity must be equal to 10% of the total content of the packages together. The collection container must be sufficiently resistant to the stored liquids.

The collection capacity only applies to liquids. Empty, uncleaned packaging does not count. The collection facility may also be realized in storage. The choice of location for the collection facility may depend on the hazardous liquids stored. Kruizinga.nl is not liable for the type of use!

Please note! Any form of modification is not allowed. If this is the case, all regulations will lapse.

Specifications

Article arrangement: New

Version: for 1x 60 litre steel/plastic drums

Floor: oil- and water tight

Colour: grey

Width (mm): 410

Volume (ltr): 70

Type: Retention Basin

Material: glassfiber reinforced polyester

Subgroup: Plastic trays

Length (mm): 820

Height (mm): 230

Weight (kg) 4



KRUIZINGA.NL®
Opslag- en transportmiddelen

KRUIZINGA.DE®
Lager- und Transportmittel

KRUIZINGA.FR®
Stockage et ressources de transport

KRUIZINGA.COM®
Material handling equipment



Technical information

Productnumber : 48-10380

EAN Code (Gtin) 8719424065268



KRUIZINGA.NL[®]
Opslag- en transportmiddelen

KRUIZINGA.DE[®]
Lager- und Transportmittel

KRUIZINGA.FR[®]
Stockage et ressources de transport

KRUIZINGA.COM[®]
Material handling equipment